

Supplement to the article

“The development, educational stratification and decomposition of mothers’
and fathers’ childcare time in Germany. An update for 2001–2013”

by

Florian Schulz & Henriette Engelhardt

published in

Zeitschrift für Familienforschung | Journal of Family Research

2017, Volume 29, Number 3, Pages 277–297.

DOI: 10.3224/zff.v29i3.02

Please cite this document as

Schulz, Florian, and Engelhardt, Henriette (2017). Supplement to the article “The development, educational stratification and decomposition of mothers’ and fathers’ childcare time in Germany. An update for 2001-2013”. DOI: 10.20378/irbo-50338.

URN: urn:nbn:de:bvb:473-opus4-504759

DOI: <http://dx.doi.org/10.20378/irbo-50475>

Contact

Dr. Florian Schulz

State Institute for Family Research (ifb) at the University of Bamberg, and

University of Bamberg (Demography)

E-Mail: florian.schulz@ifb.uni-bamberg.de

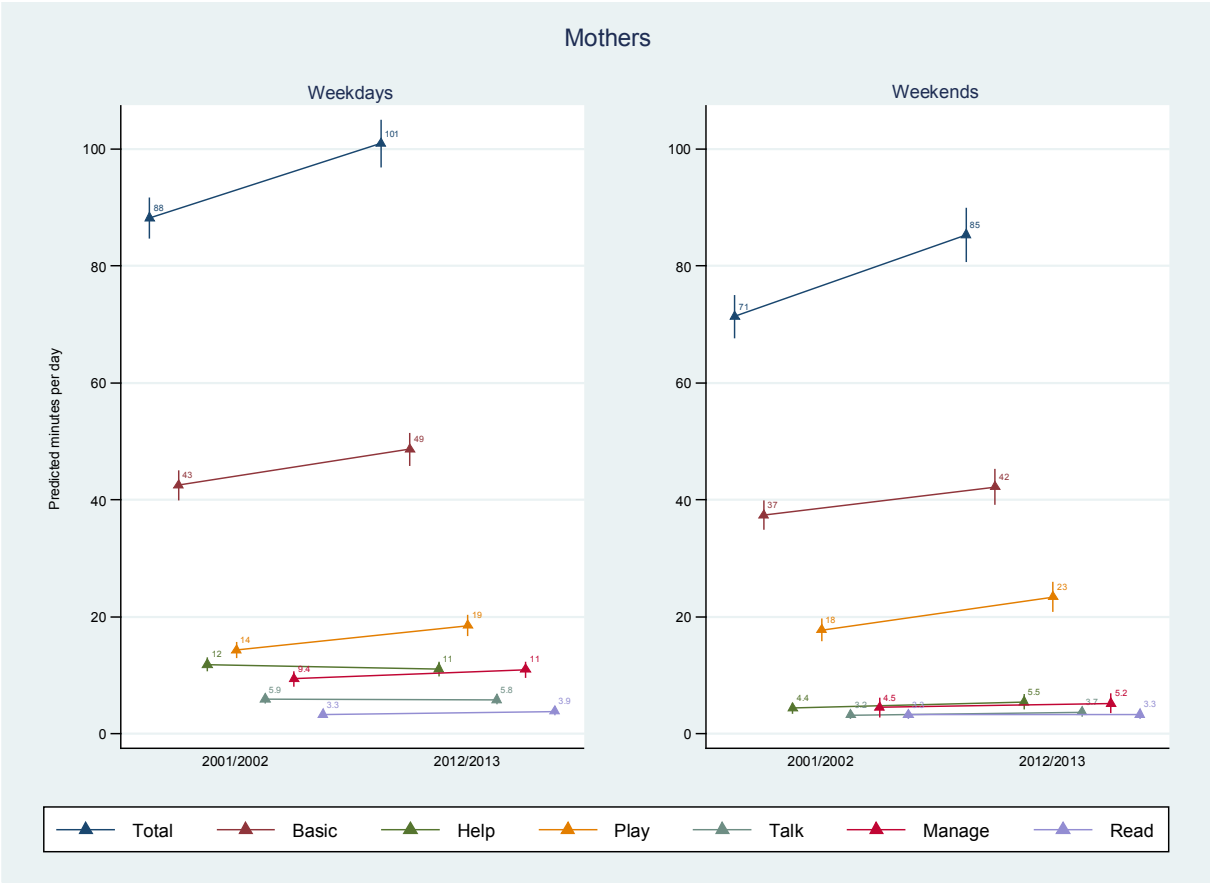
Prof. Dr. Henriette Engelhardt-Wölfler

University of Bamberg (Demography), and

State Institute for Family Research (ifb) at the University of Bamberg

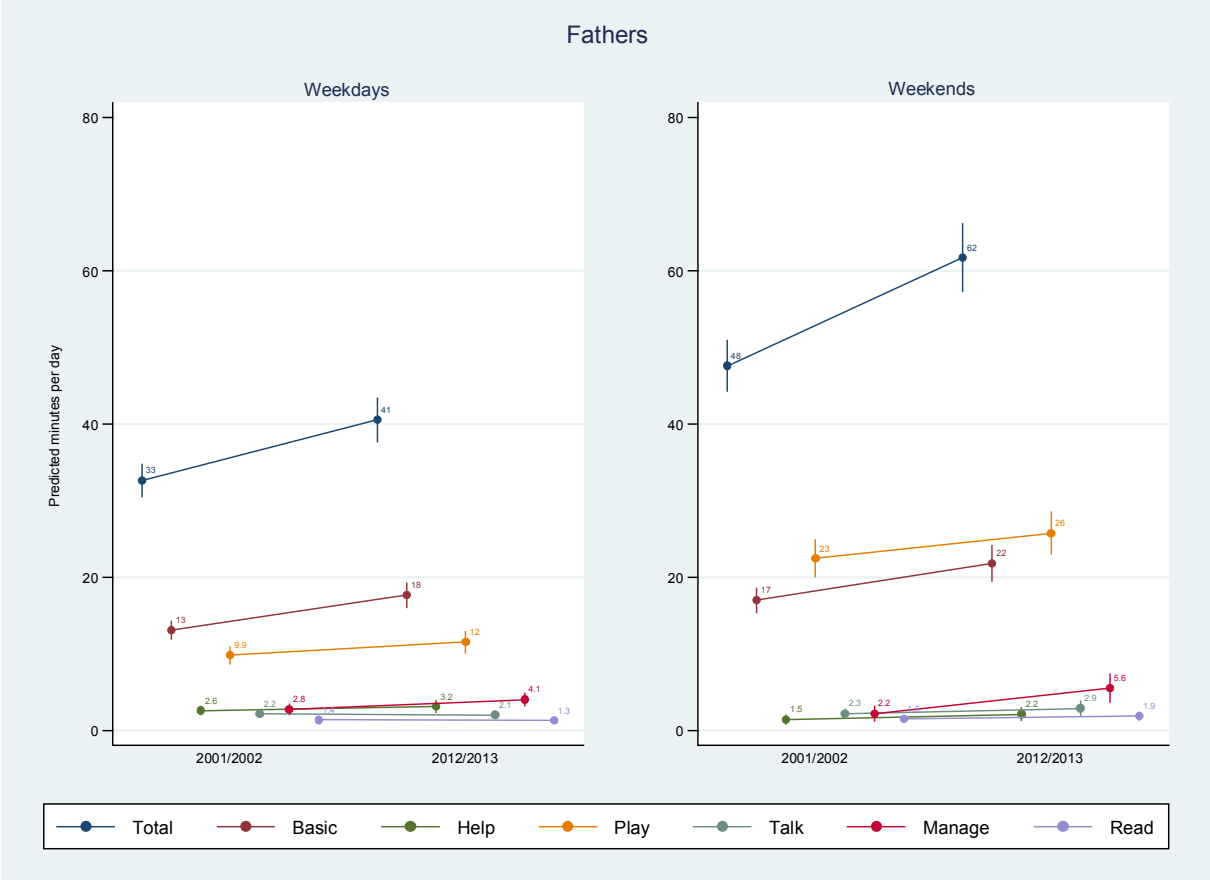
E-Mail: henriette.engelhardt-woelfler@uni-bamberg.de

Figure 1: Development of mothers' time use for total childcare and for specific activities, adjusted average minutes on weekdays and weekends



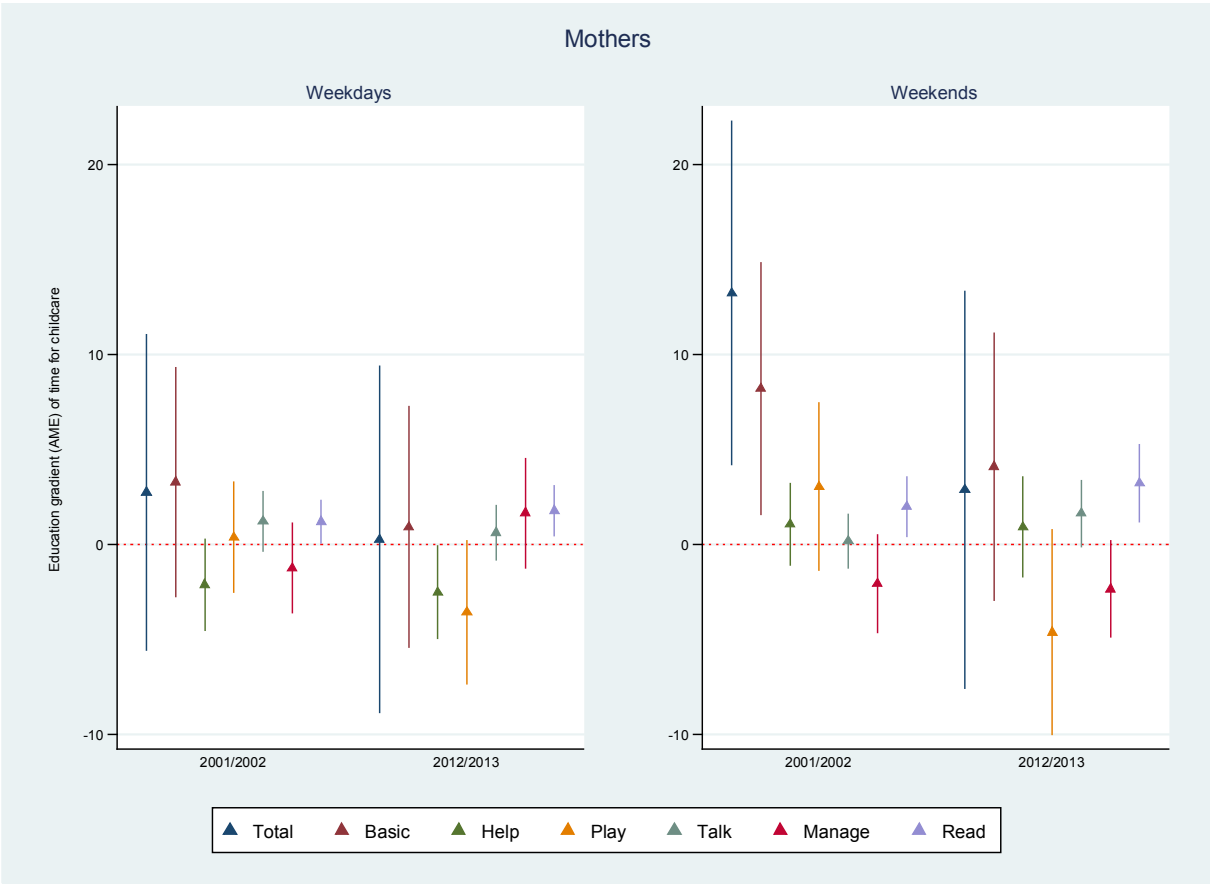
Note. Predictions and 95%-confidence intervals are calculated as margins at the means from the regression models in Table A2. Source: GTUS 2001/2002, 2012/2013, own calculations.

Figure 2: Development of fathers' time use for total childcare and for specific activities, adjusted average minutes on weekdays and weekends



Note. Predictions and 95%-confidence intervals are calculated as margins at the means from the regression models in Table A3. Source: GTUS 2001/2002, 2012/2013, own calculations.

Figure 3: Education gradients of mothers' childcare time for weekdays and weekends



Note. Average marginal effects of education and 95%-confidence intervals from the regression models in Table A2. Source: GTUS 2001/2002, 2012/2013, own calculations.

Figure 4: Education gradients of fathers' childcare time for weekdays and weekends



Note. Average marginal effects of education and 95%-confidence intervals from the regression models in Table A3. Source: GTUS 2001/2002, 2012/2013, own calculations.

Table 1a: Results of the decomposition analysis for **mothers** on weekdays and weekends, 2001/2002–2012/2013

	Total	Basic	Help	Play	Talk	Manage	Read
Weekdays							
<i>Total change</i>	12.7***	6.1***	-0.8	4.2***	-0.1	1.6	0.6
<i>Characteristics</i>	-0.2	0.2	-0.6	0.3	-0.3	-0.4	0.3**
University degree	-0.0	0.0	-0.1*	-0.2*	0.0	0.1	0.1**
Age	-0.7	-0.4	0.1	-0.2	-0.1	-0.4	0.2*
Single	-0.1**	-0.1**	-0.0	-0.0	-0.0***	-0.0	0.0
Children in household	-0.7***	-0.4**	-0.3***	0.4***	-0.2***	-0.2*	0.1*
Youngest child 3–5	1.4***	1.1***	-0.1**	0.3***	-0.0	0.0	0.0
Youngest child 6–9	0.3***	0.3***	-0.0***	0.1***	-0.0***	0.0	0.0***
Youngest child 10–12	-0.1***	-0.1***	0.0***	-0.0***	0.0***	-0.0***	-0.0***
East Germany	-0.3	-0.2	-0.1*	-0.0	0.0	0.0	-0.0
<i>Coefficients</i>	13.0***	5.9***	-0.2	3.9***	0.1	2.0*	0.3
University degree	-0.6	-0.6	-0.0	-1.0*	-0.1	0.7	0.1
Age	1.7	11.9	-2.5	5.3	-6.1	-9.8	0.9
Single	1.9	0.7	0.3	1.0	0.2	0.1	-0.3*
Children in household	7.1	6.9*	1.3	0.5	0.1	-0.2	-2.0**
Youngest child 3–5	-0.3	-1.3	0.8	-0.3	0.1	0.6	-0.3
Youngest child 6–9	-1.3	-2.1	0.4	-0.9	0.5	1.0	-0.4
Youngest child 10–12	-3.7	-2.4	1.0	-2.7**	0.4	0.6	-0.6
East Germany	0.7	-0.2	0.1	0.2	0.0	0.7	0.0
Constant	7.5	-7.0	-1.4	2.0	4.9	8.4	2.8
Weekends							
<i>Total change</i>	14.0***	4.9**	1.1	5.7***	0.5	0.7	0.1
<i>Characteristics</i>	-0.1	0.5	-0.0	0.1	0.1	-1.1**	0.4**
University degree	0.1	0.2	0.0	-0.2	0.1*	-0.1	0.1***
Age	-1.0	-0.3	0.1	-0.6	-0.0	-0.5	0.3**
Single	-0.0	-0.1*	0.0	0.0	-0.0*	-0.0	0.0
Children in household	-0.2	-0.5*	-0.1	0.5**	-0.0	-0.1	0.0
Youngest child 3–5	1.2***	1.0***	-0.0	0.3***	0.0	-0.1*	-0.0
Youngest child 6–9	-0.1***	-0.1***	0.0***	-0.0***	-0.0	0.0*	-0.0***
Youngest child 10–12	0.7***	0.5***	-0.0**	0.2***	0.0	-0.0*	0.0***
East Germany	-0.6*	-0.2	0.0	-0.3	0.1	-0.2*	-0.0
<i>Coefficients</i>	14.1***	4.4*	1.1	5.6***	0.4	1.8	-0.4
University degree	-2.3	-0.9	0.1	-1.9*	0.4	-0.0	0.3
Age	-1.1	7.3	-3.1	5.4	-5.7	-4.0	-0.4
Single	-0.3	1.0	-0.3	0.1	-0.0	-0.7	-0.5*
Children in household	7.8	10.0*	2.4	-1.1	0.0	-3.2	-0.6
Youngest child 3–5	-0.4	0.1	0.2	-1.0	-0.2	0.6	-0.4
Youngest child 6–9	-1.4	0.5	0.4	-2.0	-0.1	-0.2	-0.9*
Youngest child 10–12	-3.1	0.2	1.3	-4.3*	-0.0	-0.1	-0.7
East Germany	-2.7*	-0.8	-0.4	-0.9	0.2	-0.6	-0.1
Constant	17.4	-12.9	0.6	11.2	5.9	9.9	3.0

Note. Coefficients of the decomposition, and significance levels: * p<.05, **p<.01, *** p<.001. Same regression equation as in Tables A-3, A-4 (but: binary for survey year and interaction of education and survey year are dropped). Source: GTUS 2001/2002, 2012/2013, own calculations.

Table 1b: Results of the decomposition analysis for **fathers** on weekdays and weekends, 2001/2002–2012/2013

	Total	Basic	Help	Play	Talk	Manage	Read
Weekdays							
<i>Total change</i>	7.9***	4.6***	0.5	1.7*	-0.1	1.3*	-0.1
<i>Characteristics</i>	0.6	-0.4	0.2	0.3	0.2*	0.0	0.0
University degree	-0.1	-0.0	0.0	0.0	-0.0	-0.0**	-0.0***
Age	-0.3	-0.7**	0.3*	-0.4*	0.2***	0.1	0.1
Single	0.2	0.1*	0.0	-0.0	-0.0	0.0	-0.0
Children in household	0.1	-0.1	-0.1	0.5***	-0.1	-0.1	0.0
Youngest child 3–5	0.5***	0.3***	0.0	0.2***	-0.0	0.0	-0.0*
Youngest child 6–9	0.2***	0.1***	-0.0	0.1***	-0.0*	-0.0	0.0
Youngest child 10–12	0.1***	0.1***	-0.0	0.0***	0.0	0.0	0.0***
East Germany	-0.2	-0.1	-0.0	-0.2	0.0	0.1	-0.0
<i>Coefficients</i>	7.3***	4.9***	0.3	1.4	-0.3	1.2*	-0.1
University degree	-0.8	-1.1	-0.3	-0.3	0.1	0.7*	0.2
Age	-8.0	-14.3*	5.7	-10.8	5.0**	1.9	2.2
Single	-0.1	0.1	-0.1**	-0.1	-0.0	0.0	0.0
Children in household	6.0	2.0	1.1	0.5	0.1	1.5	-0.0
Youngest child 3–5	0.6	0.1	-0.4	0.6	0.1	-0.3	0.3*
Youngest child 6–9	1.2	1.4	-0.1	-0.2	0.1	-0.2	0.3
Youngest child 10–12	-0.6	0.3	-0.3	-0.0	-0.6*	-0.4	0.2
East Germany	-0.4	-0.3	0.0	-0.6	-0.1	0.4*	-0.0
Constant	9.4	16.7**	-5.3	12.3*	-5.0**	-2.4	-3.3*
Weekends							
<i>Total change</i>	14.1***	4.8***	0.7	3.3	0.7	3.3**	0.3
<i>Characteristics</i>	0.6	-0.1	-0.2	0.9	0.4	-0.5	0.1
University degree	-0.5**	-0.2*	-0.1**	-0.1	-0.0	-0.1	-0.1*
Age	-0.9	-0.7	0.0	-0.6	0.2	0.0	0.1
Single	0.3	0.1	-0.0	0.2	0.0	0.0	0.0
Children in household	0.7	0.0	-0.1	0.8***	0.1	-0.2	0.1
Youngest child 3–5	1.0***	0.5***	0.0	0.5***	-0.0	-0.1	0.0
Youngest child 6–9	-0.3***	-0.2***	0.0	-0.2***	0.0	0.0	-0.0*
Youngest child 10–12	0.8***	0.4***	-0.0	0.4***	0.0	-0.0	0.0***
East Germany	-0.5*	-0.1	-0.0	-0.2	0.0	-0.2*	-0.0
<i>Coefficients</i>	13.5***	4.9***	0.9	2.4	0.3	3.8***	0.2
University degree	0.9	0.0	0.5	-0.7	0.0	0.7	0.0
Age	-9.1	-9.7	-0.3	-14.0	4.2	7.3	3.6
Single	0.3	0.1	0.0	0.1	0.0	0.0	0.0
Children in household	-1.2	2.0	0.7	-3.1	-1.4	0.4	-0.6
Youngest child 3–5	-0.1	0.1	-0.2	0.2	-0.2	0.3	-0.1
Youngest child 6–9	-1.6	-0.5	0.1	-1.3	-0.4	0.5	-0.0
Youngest child 10–12	-3.3	-0.6	0.1	-1.3	-0.6	0.0	-0.4
East Germany	-2.1	-0.2	-0.3	-1.2	0.1	-0.7	0.1
Constant	29.7	13.7	0.2	23.6	-1.3	-4.7	-2.5

Note. Coefficients of the decomposition, and significance levels: * p<.05, **p<.01, *** p<.001. Same regression equation as in Tables A-3, A-4 (but: binary for survey year and interaction of education and survey year are dropped). Source: GTUS 2001/2002, 2012/2013, own calculations.